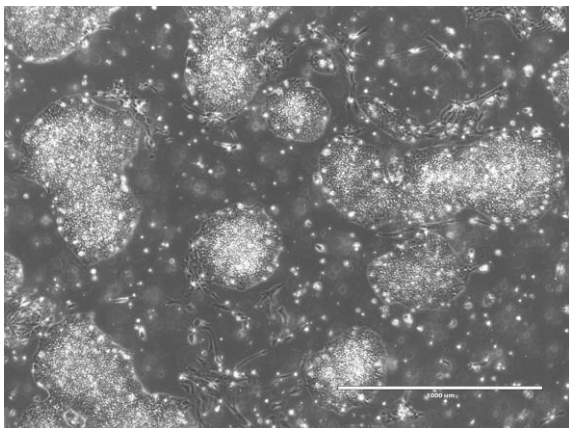
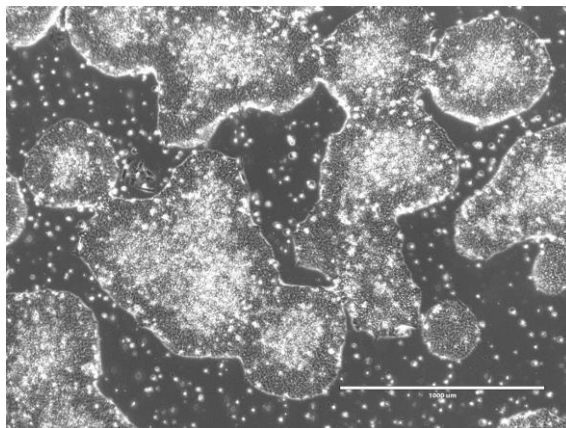


【 CiRA-j-1433 】 Morphology of iPSC colonies

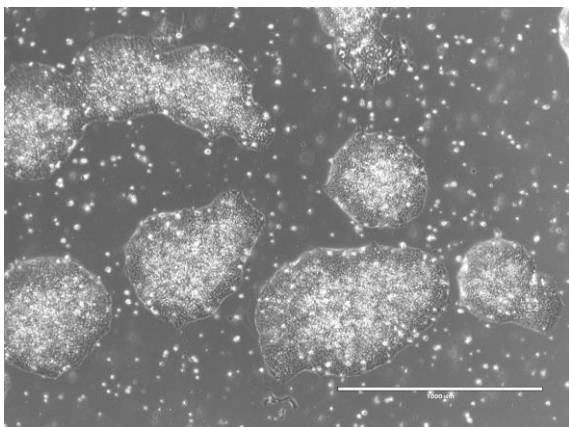
CiRA-j-1433-A: passage-3



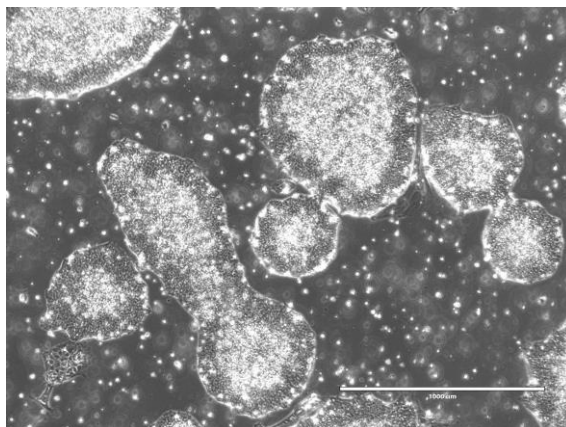
CiRA-j-1433-B: passage-3



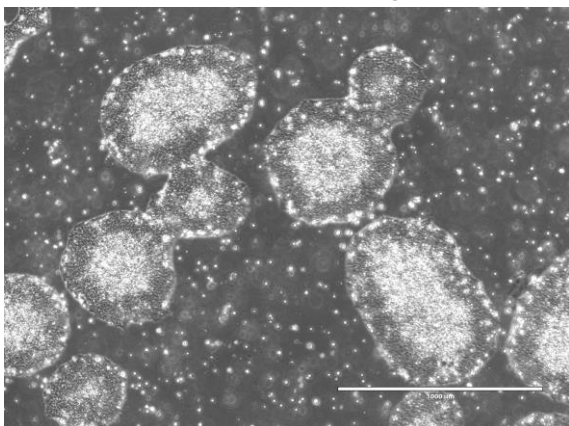
CiRA-j-1433-C: passage-3



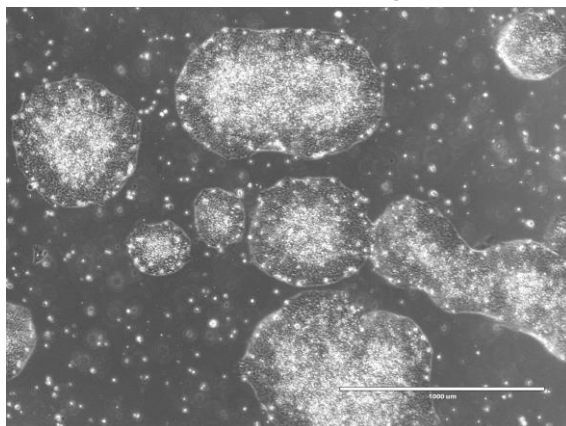
CiRA-j-1433-D: passage-3



CiRA-j-1433-E: passage-3



CiRA-j-1433-F: passage-3



(All images were captured at 4x magnification)